



WORLDWIDE CULTURAL EXPEDITIONS



Antarctica ▪ Arctic ▪ Africa ▪ Latin America
Central America & Caribbean ▪ Europe

2025/2026 SAILINGS



Polar Bear, Svalbard



Contents

Where We Travel	6
The Swan Hellenic Difference	8
Sustainability	10
Cultural Cruising	12
Meet the Experts	14
Our Partnerships	16
A Typical Day	18
What's Included	20
Cruise Calendars	22
Our Ships	32
Unforgettable Dining	36
Staterooms and Suites	38
Deck Plans	42
Contact Us	46

A legacy of discovery. A future of possibilities.

Swan Hellenic has always been a pioneering company. For over 70 years, we've been known for creating unique, cultural expedition cruises for those who want to explore more.

Today, we're more ambitious than ever—and our passion for adventure and cultural exploration has only grown stronger. We sail to places unreachable by others, seek immersive experiences, and make life-changing discoveries with every journey. Our three state-of-the-art boutique expedition ships are the epitome of travel excellence.

Let us take you to places where the earth's mysteries still hold untold wonders. With us, you'll see what others don't. We look forward to welcoming you on board.



Hydrurga Rocks, Antarctic Peninsula



DESTINATIONS
Caribbean



DESTINATIONS
Central America



DESTINATIONS
Latin America

2025-26 sailings

Uncover magnificent sights all over the world. Our 2025-26 sailings on SH Vega and SH Diana will take you on a world class adventure like no other.

— SH Vega — SH Diana



DESTINATIONS
Antarctica



DESTINATIONS
Arctic



DESTINATIONS
Europe



DESTINATIONS
Africa

GREENLAND SEA

SVALBARD

NORWEGIAN SEA

ICELAND

SWEDEN

NORWAY

UK

NETHERLANDS

GERMANY

FRANCE

PORTUGAL
SPAIN

ITALY

GREECE

TURKEY

CYPRUS

SENEGAL

GHANA

DESTINATIONS
Africa

KENYA

SEYCHELLES

TANZANIA

SOUTH
ATLANTIC OCEAN

ANGOLA

MADAGASCAR

NAMIBIA

SOUTH
AFRICA

ATLANTIC
OCEAN

See what others don't

Some people see things as they are, others look further. Let us take you on a journey that will change the way you see the world. Sail to some of the most incredible, remote destinations on the planet. When you travel with us, the wonders of the world take on a richer hue.





Over 70 years of cruise expertise

That's how long we've been navigating the world's waters. Swan Hellenic is built on a passion for exploration, a reputation for safety and professionalism of the highest standard.

Boutique ships

Just you and nature, that's how you'll feel on our 5-star contemporary 'Scandinavian inspired' ships. With open-plan design, panoramic views and a focus on wellness, they're the perfect place to relax, recharge and explore.

Intuitive service

When it comes to anticipating your needs, no request is too big or too small. To us, personal and unobtrusive service means everything from making sure you're fully equipped for an Antarctic excursion to remembering your favourite gin serve when it comes to pre-dinner drinks.

Enriching cultural expeditions

Once, we travelled to educate—professors, scientists, researchers. Over the years, we've developed a deep knowledge of the world. Today, we use this knowledge to create immersive cultural experiences that take you to the heart of a place.

A culture of care for people and planet

Swan Hellenic has always been passionate about our planet's rich environmental and cultural heritage. It's in our name and nature, and it's what inspires us to experience the world's wild unspoilt places and explore its rich and diverse cultures, ancient sites and civilizations.

Aerial view of a fish farm in the blue, Mediterranean Sea in Greece

Proud member of



Association of Arctic Expedition Cruise Operators **AECO**

Our focus areas

Swan Hellenic's sustainability policies are fully compliant with, and exceed, the cruise industry's global standards governing its safety, environmental and labour aspects. In line with the UN sustainable development goals, we are focusing on the following 6 key areas.

Responsible Cruising

We are committed to preserving the beauty of the world we explore for future generations, taking urgent and innovative concrete action to reduce our environmental footprint.

Climate Action

Exploring the globe, we constantly encounter dramatic evidence of global warming and climate change. This strengthens our resolve to take urgent action—within our organisation and in the destinations we travel to—to combat their causes and mitigate their effects.



Carine Zimmermann

Equality, Diversity & Inclusion

Dynamically inclusive companies and societies are key to sustainable development. As the pioneer of cultural expedition cruising, we welcome adventurers of every age, gender, orientation, nationality and interest to explore the world. We promote gender equity and women and girls' empowerment worldwide, and have strong internal policies that ensure our employees enjoy equal opportunities of employment and professional development, irrespective of gender, ethnicity, culture, religion, age, sexual orientation, functional ability and political view.

Life in the Water

With our strong seafaring heritage, we are committed to the responsible use of marine resources for sustainable development. This is vital in promoting and conserving the health and biodiversity of the Earth's waters.

Legacies of the Land

We strive to preserve the natural and cultural landmarks that our expedition cruises explore, promoting and advancing the conservation, restoration and sustainable use of terrestrial ecosystems and historic sites for future generations.

Thriving Communities

We build strong connections with the communities that host our cultural expedition cruises, respecting their cultural and environmental integrity, while partnering with them to generate positive impacts.

Quality Education

Education and research empower human potential. Proud of our roots in British academia, we work to support regional research initiatives, ensuring access to inclusive and equitable education and providing lifelong learning opportunities for all.

Exploring with head and heart

Swan Hellenic pioneered cultural expedition cruising in 1954, when we accompanied members of the Hellenic Society around the famous sites of ancient Greece in the company of eminent classicists.

Today, we continue to explore with the same passion and thirst for adventure.





Explore

Every Swan Hellenic cruise is the same today as it always was, combining geographical exploration with cultural and scientific discovery. We don't just take you to explore the most extraordinary places on Earth. We bring you the company of like-minded people and renowned experts, who offer eye-opening lectures and are on hand for informal questions and discussion throughout your cruise.

Experience

When you choose Swan Hellenic to see what others don't—you can be sure you'll do so with a full perspective and real insight into the history, cultures, wildlife, flora, geology and geography of each destination. Briefings before each disembarkation and recaps afterwards supplement our lectures and talks, stimulating a relaxed social environment that encourages the sharing of experiences.



Enrich

At the same time, every Swan Hellenic cruise is also full of opportunities for you to develop your creative passions, with professionals on board to support you in photography and more. A library with a multitude of books on every subject completes the picture, so you can take your interests to another level.

It's the depth of these other dimensions that's unique to Swan Hellenic, making us the first choice of adventurous minds worldwide.

Learn from the best

Renowned in their respective fields, our onboard experts have unparalleled knowledge of the regions we visit.

From historians to naturalists, meteorologists to biologists, our friendly experts will offer you incredible insight into the wildlife, history and geology of the places we visit. Tap into their expertise via our extensive lecture programme, or feel free to interact with them throughout your trip. On board our boutique ship, you're likely to grab a coffee with an expert, birdwatch on the deck alongside an accomplished ornithologist, or chat with them over dinner—they're more than happy to share their knowledge with you!





Geologists

Everyone loves a beautiful landscape. But understanding its geology and how it was formed will change your perspective forever.



Photographers

Chat to our expert photographers and learn how to best capture movement and light in the extraordinary destinations we visit.



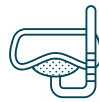
Historians

Our historians will enrich your expedition experience with incredible stories and unmatched knowledge of the places we visit.



Ornithologists

Will you be lucky enough to spot a snow petrel? Learn from our ornithologists and be inspired to identify the incredible birds you'll see.



Marine Biologists

As you encounter whales, dolphins and other marine species, you can consult our marine biologists for fascinating anecdotes.



Expedition Leaders

In charge of your excursions, these leaders will make sure you get the best opportunities to experience amazing wildlife and landscapes.



Activity Leaders

From kayaking excursions to hiking trips, you can count on our experienced activity leaders to guide you to remote, inaccessible destinations.



Naturalists

Charles Darwin may not be on board, but our experts will give you a new understanding of organisms, habitats and the natural world.



Botanists

Identify plant life at sea and on land with our expert botanists, and get insights into our ecosystems and climate.



Archaeologists

Join our archaeologists and discover what lies beneath our feet. Uncover lost cities and ancient civilizations that shaped our history.



SETI Institute scientists

Guest speakers from the SETI Institute, a space and earth science research organisation, join us on a selection of our voyages. Enjoy expert insights into astronomy, astrophysics, astrobiology and planetary science.

Explore your passions

Swan Hellenic is delighted to partner with world-leading pioneers in their fields, to bring you the very best themed sailings, where you can explore your passions and deepen your knowledge of the world around you.

We are committed to learning and exploration – and invite experts in a range of topics to join select sailings. From well-being and culinary excellence, to the earth and space, these sailings give a unique opportunity to enjoy what you love as part of your trip.





A new level of well-being voyages

Swan Hellenic partners with Chopra for Explore & Restore, a transformative well-being program. Immerse yourself in holistic travel with daily yoga, journaling, meditation, and awe-inspiring cultural expeditions, crafted in collaboration with world-renowned pioneer Dr. Deepak Chopra.



An odyssey of gastronomic exploration

MARIS sailings offer unique gastronomic experiences, featuring exclusive access to some of the world's top culinary creators. Guests will get to sample carefully curated menus that reflect the iconic, remote territories we explore. Each MARIS sailing welcomes a world-famous chef onboard, serving an astonishing signature dish each night, building to the extraordinary Gala Dinner.



Explorations of Earth and beyond

Swan Hellenic proudly partners with the SETI Institute, supporting NASA, NSF, and academia in exploring profound questions. These sailings welcome SETI Institute scientists as guest speakers, providing guests with expert insights into astronomy, astrophysics, astrobiology, and planetary science discoveries. SETI, or 'search for extra-terrestrial intelligence,' focuses on finding life within and beyond our solar system.



Endless ways to spend your day

There's no such thing as a typical day with Swan Hellenic. We bring you endless possibilities to tailor every moment to your interests and mood, so you'll always have your dream day on board.

Plan your perfect day

6am

Waking comfortably refreshed in your stateroom, early risers can join the team on deck for an early morning breakfast. Breathe in the invigorating ocean air as you sip your fresh tea or coffee. What a wonderful way to prepare for the day's adventures exploring a treasure trove of incredible sites.



7am

Early risers have the time to take a fitness class or workout in our gym. Refuel with a light continental or substantial cooked breakfast—a perfect foundation for the action-packed day ahead.

8am

Prepare yourself for today's shore excursion as we disembark at one of our ports, many of which are only accessible to smaller cruise ships. Today's expert-led expedition tour could immerse you in remote communities, natural landscapes or historical treasures. Get ready to experience sights, sounds and flavours that go beyond the imagination.



12pm

Back on board, you'll have the time to share experiences over lunch, whether snacking in the Club Lounge or savoring something a little more substantial in the Swan Restaurant or Pool Bar & Grill.



2pm

There may be time after lunch for another shore excursion at our current port of call. Delve into local culture, adventure into panoramic vistas, or listen to the extraordinary tales of the explorers that sailed these seas long ago.

4pm

Indulge in our High Seas High Tea or retreat to the comfort of your stateroom for a movie on your flatscreen TV. Sweat it out in our stunning panoramic sauna, take a dip in the pool, take a mindfulness class, or pop to the salon for a relaxing treatment.



6.30pm

Each evening a member of our expert team or a guest lecturer will talk you through the day's highlights. We will then discuss the shore excursion plans for the following day.

7pm

Time to enjoy the pleasures of stylish dining where our chefs have prepared international delights along with wines chosen by our sommelier.



9.30pm

End a perfect day with your favourite drink and a wonderful piano performance. Or head out to the deck for some stargazing under the clear night sky.

Extra peace of mind

Our cruise fares include all onboard meals, 24-hour room service, select drinks and more. One shore excursion per port is also included in your price, so you don't have to worry about escalating costs when exploring your incredible surroundings. With all this, all you have to do is relax and concentrate on having a wonderful time.

- Group transfer from the airport to the hotel the day before embarkation, from the hotel to the cruise port on embarkation day and from the cruise port to the airport on disembarkation day
- One night pre-cruise accommodation with breakfast in a 4/5-star hotel or onboard
- All meals on board
- Onboard accommodation in a stateroom selected category
- Coffee, tea, soft drinks and selected alcoholic beverages available 24-hours per day
- Lecture programmes by our experienced guest speakers
- One selected shore excursion per port of call
- Standard WiFi
- Onboard gratuities & port taxes
- Selected expedition activities led by our expedition team
- 24/7 self service laundry on deck 4
- Branded Swan Hellenic expedition parka and use of rubber boots in Polar Region

Enhance your experience

You also have the option of adding some extra special services to your cultural cruise experience (additional charges apply):

- Air fares (unless otherwise stated)
- Optional land programmes and hotel accommodation pre or post cruise
- Premium and private shore excursions
- Kayak and private Zodiac tours in the expedition areas
- Premium alcoholic beverages
- Spa & beauty treatments
- Laundry services
- Retail shop purchases
- Travel insurance

Embark on an Antarctic odyssey

From icy blue glaciers and soaring mountain peaks, to mesmerising icebergs and sparkling, clear fjords, the incredible natural wonders of Antarctica have enchanted explorers for over 200 years.






Visit the largest desert on Earth and embrace the outstanding beauty and breathtaking wildlife of this unique, icy destination.

Our boutique ice-class ships make this rarely-visited corner of the world more accessible than ever. Join us for an epic expedition cruise like no other—it's sure to be an adventure you'll never forget.




Antarctic Peninsula, penguins

Antarctica 2024

 Itinerary	 From → To	 Ship	 Nights	 Departure
Africa to America Antarctic Epic	Cape Town → Ushuaia	SH Diana	20	13 Nov 2024
Long Arc to Antarctica	Buenos Aires → Ushuaia	SH Vega	17	18 Nov 2024
Antarctic Peninsula Odyssey	Ushuaia roundtrip	SH Diana	9	3 Dec 2024
Antarctic Peninsula Odyssey	Ushuaia roundtrip	SH Vega	10	5 Dec 2024
Antarctic Peninsula Discovery	Ushuaia roundtrip	SH Diana	9	13 Dec 2024
Antarctic Peninsula in Depth	Ushuaia roundtrip	SH Vega	13	15 Dec 2024
In Shackleton's Footsteps	Ushuaia roundtrip	SH Diana	17	22 Dec 2024
Weddell Sea Discovery	Ushuaia roundtrip	SH Vega	11	28 Dec 2024

Antarctica 2025

 Itinerary	 From → To	 Ship	 Nights	 Departure
Weddell Sea Discovery	Ushuaia roundtrip	SH Diana	11	8 Jan 2025 15 Feb 2025
Antarctic Peninsula Discovery	Ushuaia roundtrip	SH Vega	9	8, 17, 26 Jan 2025 4, 13, 22 Feb 2025
In Shackleton's Footsteps	Ushuaia roundtrip	SH Diana	17	19 Jan 2025
Antarctic Peninsula Odyssey	Ushuaia roundtrip	SH Diana	10	5 Feb 2025
Antarctic Peninsula Discovery	Ushuaia roundtrip	SH Diana	9	26 Feb 2025
South Atlantic Semi-Circumnavigation	Ushuaia → Cape Town	SH Diana	20	7 Mar 2025
Antarctic Peninsula in Depth	Ushuaia roundtrip	SH Vega	11	3 Mar 2025
The Long Way cruise: from Buenos Aires to Ushuaia	Buenos Aires → Ushuaia	SH Vega	17	14 Nov 2025
South Atlantic cruise: from South Africa to Antarctica	Cape Town → Ushuaia	SH Diana	20	15 Nov 2025
Antarctic Wonders: roundtrip cruise from Ushuaia	Ushuaia roundtrip	SH Vega	9	1, 10 Dec 2025 19, 28 Dec 2025
Roundtrip cruise from Ushuaia	Ushuaia roundtrip	SH Diana	13	5 Dec 2025
Expedition to Antarctica: Weddell Sea cruise	Ushuaia roundtrip	SH Diana	11	29 Dec 2025

Antarctica 2026

 Itinerary	 From → To	 Ship	 Nights	 Departure
Expedition to Antarctica: Weddell Sea cruise	Ushuaia roundtrip	SH Vega	11	6 Jan 2026 26 Jan 2026
Antarctic Peninsula Odyssey cruise	Ushuaia roundtrip	SH Diana	10	9 Jan 2026 5 Feb 2026
Antarctic Wonders: roundtrip cruise from Ushuaia	Ushuaia roundtrip	SH Vega	9	17 Jan 2026 23 Feb 2026
Antarctica, the Falklands & South Georgia roundtrip cruise	Ushuaia roundtrip	SH Diana	17	19 Jan 2026
Antarctica, the Falklands & South Georgia roundtrip cruise	Ushuaia roundtrip	SH Vega	17	6 Feb 2026
Antarctic Wonders: roundtrip cruise from Ushuaia	Ushuaia roundtrip	SH Diana	9	15, 24 Feb 2026
Cruise to the Antarctic Circle	Ushuaia roundtrip	SH Vega	13	4 Mar 2026
South Atlantic cruise: from Antarctica to South Africa	Ushuaia → Cape Town	SH Vega	20	17 Mar 2026

The legends of the Arctic

Just 500 miles from the North Pole, the remote Svalbard archipelago is one of Europe's last great wildernesses. Dramatic snowy peaks and enormous glaciers frame vast tundra deserts and spellbinding icebergs.




At the height of the Arctic summer, the sun glows through the night, wildflowers pop up across the tundra, and Svalbard comes to life. Wildlife abounds – polar bears, walrus, reindeer, ringed seals, arctic foxes and many whale species make their homes here.

Join us to explore this last frontier – it's sure to be an extraordinary adventure.








SH Diana, Gashamna

Arctic 2025

 Itinerary	 From → To	 Ship	 Nights	 Departure
Cruise from Canada to Iceland	Halifax → Reykjavik	SH Vega	11	22 May 2025
Cruise from Iceland to Svalbard	Reykjavik → Longyearbyen	SH Vega	11	2 Jun 2025
Iceland to Svalbard cruise	Reykjavik → Longyearbyen	SH Diana	9	13 Jun 2025
Cruise from Svalbard to Norway	Longyearbyen → Tromso	SH Diana	10	22 Jun 2025
Exploring Svalbard Cruise	Longyearbyen roundtrip	SH Vega	7	13, 20, 27 Jun 2025 4, 11 Jul 2025
Roundtrip cruise to the edge of the Arctic	Tromso roundtrip	SH Diana	10	1 Jul 2025 11 Jul 2025
Iceland roundtrip cruise	Reykjavik roundtrip	SH Vega	8	31 Jul 2025
Iceland to Greenland roundtrip cruise	Reykjavik roundtrip	SH Vega	12	8 Aug 2025
Cruise from Iceland to Greenland	Reykjavik → Kangerlussuaq	SH Vega	10	20 Aug 2025
Greenland Northern Lights roundtrip cruise	Kangerlussuaq roundtrip	SH Vega	16	30 Aug 2025
Canadian Arctic and Northern Lights cruise	Kangerlussuaq → Halifax	SH Vega	15	15 Sep 2025

Arctic 2026

 Itinerary	 From → To	 Ship	 Nights	 Departure
Cruise from Canada to Iceland	Halifax → Reykjavik	SH Vega	11	18 May 2026
Odyssey of Light: from Iceland to the Lofoten Islands	Reykjavik → Tromso	SH Vega	11	29 May 2026
Heart of Svalbard cruise	Tromso → Longyearbyen	SH Diana	9	4 Jun 2026
Roundtrip cruise to the edge of the Arctic	Tromso roundtrip	SH Vega	8	9, 19 Jun 2026 29 Jun 2026 9, 19 Jun 2026
Exploring Svalbard Cruise	Longyearbyen roundtrip	SH Diana	7	13, 20 Jun 2026 27 Jun 2026 4, 11 Jul 2026
Arctic cruise in Svalbard, Greenland and Iceland	Longyearbyen → Reykjavik	SH Diana	12	18 Jul 2026
Odyssey of Light: from the Lofoten Islands to Iceland	Tromso → Reykjavik	SH Vega	11	29 Jul 2026
Cruise the Arctic: Iceland and East Greenland	Reykjavik roundtrip	SH Diana	10	30 Jul 2026
Iceland to Greenland cruise	Reykjavik → Nuuk	SH Vega	12	15 Aug 2026
Greenland & Northern Lights cruise	Nuuk roundtrip	SH Vega	7	27 Aug 2026
Northern Lights cruise from Greenland to Canada	Nuuk roundtrip	SH Vega	14	3 Sep 2026
Arctic cruise from Greenland to Canada & Northern Lights	Nuuk → Halifax	SH Vega	13	17 Sep 2026

Experience the unforgettable African coast

A land of fascinating cultures, extraordinary wildlife and spellbinding landscapes, it's no surprise that this enchanting continent has been attracting curious adventurers for centuries.

Explore some of the least-visited parts of Africa, as you discover enduring traditions and a rich cultural heritage.

Africa's astounding natural beauty is unparalleled – from lush rainforests, and sub-Saharan savannahs, to glorious tropical coastlines and endless rippling deserts. Whether you're snorkelling in crystal clear waters, or watching roaming wildlife on safari, no matter where you are in Africa, unforgettable adventures await.

Seychelles, drone view

Africa 2025

Itinerary	From → To	Ship	Nights	Departure
Cruising in Namibia: The Skeleton Coast	Cape Town → Luanda	SH Diana	11	27 Mar 2025
Southwest Africa cruise	Luanda → Tema (Accra)	SH Diana	13	7 Apr 2025
Cruise West Africa: The Slavery Coast	Tema (Accra) → Dakar	SH Diana	13	20 Apr 2025
Moroccan Coast & Atlantic Islands cruise	Dakar → Lisbon	SH Diana	9	3 May 2025
Seychelles cruise	Victoria, Mahe Island → Victoria, Mahe Island	SH Diana	10	9 Oct 2025
Cruise from Seychelles to Kenya	Victoria, Mahe Island → Mombasa	SH Diana	10	19 Oct 2025
Cruise from Kenya to South Africa	Mombasa → Cape Town	SH Diana	17	29 Oct 2025

Africa 2026

Itinerary	From → To	Ship	Nights	Departure
Cruising in Namibia: The Skeleton Coast	Cape Town → Luanda	SH Diana	11	25 Mar 2026
Southwest Africa cruise	Luanda → Tema (Accra)	SH Diana	13	5 Apr 2026
Cruise West Africa: The Slavery Coast	Tema (Accra) → Dakar	SH Diana	13	18 Apr 2026
Cruise from Senegal to Morocco	Dakar → Casablanca	SH Diana	7	1 May 2026
Atlantic cruise from Portugal to Senegal	Lisbon → Dakar	SH Diana	9	7 Sep 2026
West Africa cruise from Senegal to Ghana	Dakar → Tema (Accra)	SH Diana	13	16 Sep 2026
West Africa cruise from Ghana to Angola	Tema (Accra) → Luanda	SH Diana	13	29 Sep 2026
West Africa cruise from Angola to South Africa	Luanda → Cape Town	SH Diana	11	12 Oct 2026

Discover the riches of the Americas and Caribbean

Visit the Americas and Caribbean and follow in the footsteps of inspirational explorers. Encounter the most biodiverse regions on the planet teeming with rare wildlife and rarely visited, hard-to-reach places. Discover relics of ancient civilisations and cosmopolitan metropolises full of vibrant cultural hotspots. Experience towering snow-capped mountains and white sun-drenched tropical beaches.

You can even immerse yourself in a holistic escape designed to nurture your whole self as we bring you the best of the world in sumptuous luxury.

Latin America 2025

Itinerary	From → To	Ship	Nights	Departure
Cruise from Argentina to Chile	Ushuaia → Valparaiso	SH Vega	13	14 Mar 2025
Cruise from Chile to Peru	Valparaiso → Callao (Lima)	SH Vega	9	27 Mar 2025
Wild Wonders: cruise from Peru to Panama	Callao (Lima) → Panama City	SH Vega	9	5 Apr 2025
Cruise from Barbados to Brazil	Bridgetown → Belem	SH Vega	11	12 Oct 2025
Cruise along the Brazilian coast: from Belém to Salvador de Bahia	Belem → Salvador de Bahia	SH Vega	8	23 Oct 2025
Brazilian soul discovery: cruise from Salvador de Bahia to Rio de Janeiro	Salvador de Bahia → Rio de Janeiro	SH Vega	6	31 Oct 2025
Discover South America: Cruise from Brazil to Argentina	Rio de Janeiro → Buenos Aires	SH Vega	8	6 Nov 2025

Latin America 2026

Itinerary	From → To	Ship	Nights	Departure
Cruise from Argentina to Chile	Ushuaia → Valparaiso	SH Vega	13	17 Mar 2026
Cruise from Chile to Peru	Valparaiso → Callao (Lima)	SH Vega	9	30 Mar 2025
Wild Wonders: cruise from Peru to Panama	Callao (Lima) → Panama City	SH Vega	9	8 Apr 2025
Mouth of the Amazon cruise: from Barbados to Brazil	Bridgetown → Recife	SH Vega	17	12 Oct 2026
Brazil soul discovery cruise	Recife → Rio de Janeiro	SH Vega	8	29 Oct 2026

Central America & Caribbean 2025

Itinerary	From → To	Ship	Nights	Departure
Panama roundtrip cruise	Panama City roundtrip	SH Vega	7	14 Apr 2025
Discover the Panama Canal: cruise from Panama to Belize	Panama City → Belize	SH Vega	9	21 Apr 2025
Belize roundtrip cruise	Belize roundtrip	SH Vega	7	30 Apr 2025
West Caribbean cruise	Belize → Fort Lauderdale	SH Vega	9	7 May 2025
Western Antilles cruise	Philipsburg → Bridgetown	SH Vega	6	6 Oct 2025

Central America & Caribbean 2026

Itinerary	From → To	Ship	Nights	Departure
Discover the Panama Canal: cruise from Panama to Belize	Panama City → Belize	SH Vega	9	24 Apr 2026
West Caribbean cruise	Belize → Fort Lauderdale	SH Vega	9	3 May 2026
Western Antilles cruise	Philipsburg → Bridgetown	SH Vega	6	6 Oct 2026

Journey through Europe's timeless treasures

Western Europe holds fascinating historical and cultural significance, shaping civilization and the modern world. This region has witnessed the rise and fall of empires, the birth of religions, and the flourishing of philosophy, arts and sciences. Uncover a wealth of knowledge, enriching our understanding of human history.






Embark on a captivating journey through the historic ports of Western Europe, visit the remarkable legacies of the Red Sea, or travel in the wake of Vikings, marvelling at Iceland's volcanic landscapes.

Follow in the footsteps of curious explorers on a magical voyage with us.








SH Diana in Chios

Europe 2025

 Itinerary	 From → To	 Ship	 Nights	 Departure
The Atlantic Legacy	Lisbon → Portsmouth	SH Diana	9	12 May 2025
British Isles cruise	Portsmouth → Dublin	SH Diana	11	21 May 2025
British Isles & Iceland cruise	Dublin → Reykjavik	SH Diana	12	1 Jun 2025
Cruise around the fjords	Tromso → Amsterdam	SH Diana	10	21 Jul 2025
From the Netherlands to Portugal: Western Europe cruise	Amsterdam → Lisbon	SH Diana	11	31 Jul 2025
Cruise from Portugal to Italy	Lisbon → Palermo	SH Diana	11	11 Aug 2025
Roundtrip cruise from Palermo to Venice & the Dalmatian Islands	Palermo → Venice	SH Diana	10	22 Aug 2025
Cruise from Italy to Greece along the Adriatic coast	Venice → Piraeus	SH Diana	8	1 Sep 2025
Cruise from Greece to Turkey	Piraeus → Istanbul	SH Diana	8	9 Sep 2025
Cruise from Turkey to Cyprus	Istanbul → Limassol	SH Diana	9	17 Sep 2025

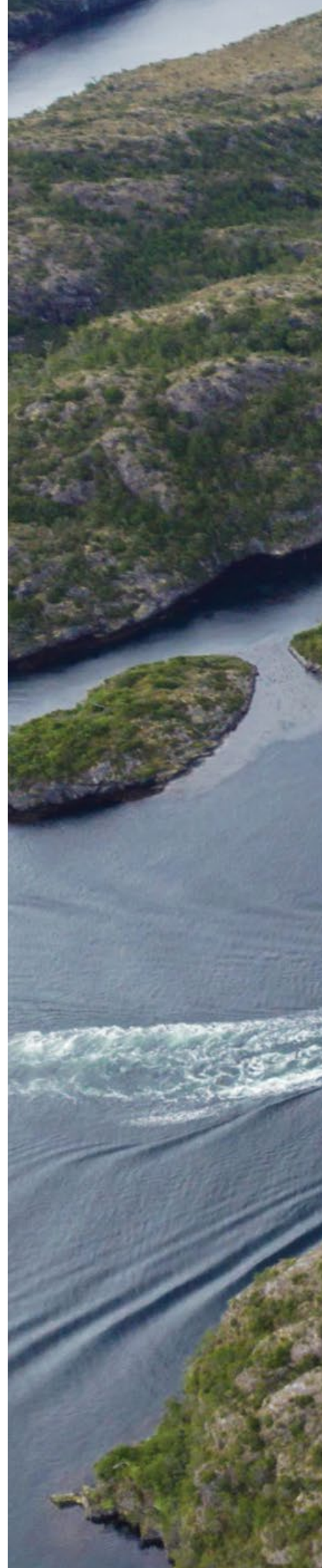
Europe 2026

 Itinerary	 From → To	 Ship	 Nights	 Departure
Morocco to Portugal cruise	Casablanca → Lisbon	SH Diana	7	8 May 2026
Western Europe cruise from Portugal to the Netherland	Lisbon → Amsterdam	SH Diana	10	15 May 2026
Norwegian Fjords cruise	Amsterdam → Tromso	SH Diana	10	25 May 2026
Iceland & British Isles cruise	Reykjavik → Dublin	SH Diana	11	17 Aug 2026
Western Europe cruise from Ireland to Portugal	Dublin → Lisbon	SH Diana	10	28 Aug 2026

A new class of exploration

Immerse yourself in breathtaking panoramic views, elegant interiors, and sophisticated onboard facilities.

Our fleet of five-star boutique ships—SH Minerva, SH Vega and SH Diana—have taken expedition cruising to new heights. Built in the Helsinki Shipyard in Finland, these ships combine the latest in expedition technology with stylish, sophisticated design.





SH Diana, Angostura White

Boutique cruising at its finest

SH Minerva, SH Vega, and SH Diana are sister ships designed to navigate the most inspiring, inaccessible places on Earth. All the while offering guests an immersive, 5-star experience.

SH Minerva & SH Vega



117 crew



152 guests



9 decks

SH Diana



127 crew



192 guests



9 decks

Our heated outdoor pool

The interiors are spacious and tasteful, with plush furnishing and floor-to-ceiling windows that give you unobstructed views of some of the most incredible landscapes in the world. On board, savor international cuisine imagined by renowned chefs, unwind in a sophisticated stateroom and make full use of state-of-the-art spa, fitness and expedition facilities.



The Swan Restaurant

As the main venue for breakfast, lunch and dinner, our restaurant serves international and local cuisine focused on quality regional ingredients from the unique destinations we visit.



Club Lounge

Vibrant and welcoming, The Club Lounge acts as a hub, serving Afternoon Tea or 24-hour tapas-inspired dining, paired with panoramic ocean views.



Observation Lounge

After a day of exploration, where relax than in the Observation Lounge? Sit back and enjoy your favourite tippie whilst getting to know your fellow guests.



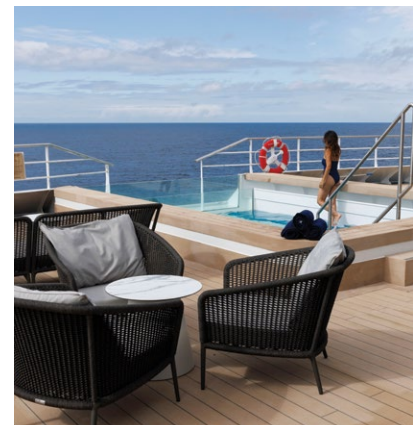
Basecamp

The perfect place to start and finish every excursion. In the elegant lobby interiors, guests can relax and share impressions over a warming cup of coffee.



Sauna with a View

Head to Deck 8 for the best views in the world. After a work out in our state-of-the-art gym, relax in our sauna or jacuzzi and take in those breathtaking vistas along the way.



Alfresco Dining & Heated Outdoor Pool

On Deck 7, you'll find a heated outside pool along with pool side seating. A great spot to enjoy the stunning scenery.

Perfectly paired with adventure

Outstanding food is all part of your boutique travel experience. Get ready to explore gastronomic excellence as Swan Hellenic's world-renowned chefs take you on an international culinary journey.

And no matter what time of day, our carefully-curated room service menu gives you a world-class gastronomic experience in the comfort of your own stateroom.





Our Culinary Team

Our top chefs have come together to create a unique gastronomic experience, with creative Italian and Asian fusion dishes, and diverse menus of exceptional quality.



Andrea Ribaldone
CONSULTANT CHEF

Andrea is an influential Italian chef with many impressive achievements, including earning three Michelin Stars for three different restaurants, and launching a series of highly successful and innovative dining concepts and venues.



Sang Keun Oh
CONSULTANT CHEF

With unrivaled experience of Japanese and French cuisine, Chef Sang Keun Oh brings a fresh perspective to the table. He has two AA Rosettes, and has been Executive chef at many acclaimed restaurants, including his own, Hibiki.



MARIS voyages offer unique gastronomic experiences, featuring exclusive access to some of the world's top culinary creators. Guests get to sample carefully curated menus that reflect the remote territories we explore.

Your home away from home

Relax in the understated elegance of your stateroom or suite. A sophisticated blend of muted tones, natural textures and intuitive technology, the Scandi-inspired design seamlessly blends the natural world with exceptional comforts. The variety of lighting options and crackling holographic fire offer the perfect option for cozy evenings, and the floor to ceiling windows and balcony doors ensure that sunsets and surprise sightings won't be missed.

Your perfect space

Each of our beautifully designed staterooms has everything you need for a pampered stay. Fluffy robes, spacious dressing and seating areas, and ample storage, as well as a well-stocked minibar and a personal safe.

The desk in your room is the perfect place to plan the next day's adventures, and you won't miss a wildlife sighting with your Nikon telescope. Glass-enclosed rain showers with luxury personal care products transform your ensuite into a personal spa.

Onboard stateroom suite.
Suite sizes and categories vary by ship.



Amenities in your cabin

- Welcome Champagne bottle
- Smart HDTV
- Minibar with soft drinks & beer
- Illy Espresso coffee machine with pods
- Kettle and Kusmi tea bags
- Towels for cabin, pool and gym
- Individually-controlled airconditioning
- Bathrobes and bedroom slippers
- Toiletries by Lajatica
- Personal Safe
- Nikon Prostaff 3S 10x42 binoculars
- Free standard Wi-Fi



Premium Suite

SH Diana → 41m² (441ft²) including balcony

SH Vega → 47m² (506ft²) including balcony

Sleeps up to 4

Premium Suites have a king size bed, separate living room, and flame-effect fireplace. There's also a luxurious ensuite bathroom – with separate bath tub and shower – walk-in wardrobe, and a 8-12m² (86-129ft²) private balcony.



Suite

SH Diana → 41m² (441ft²) including balcony

SH Vega → 40m² (431ft²) including balcony

Sleeps up to 4

Suites feature a king size bed, and have a separate living room, with a flame-effect fireplace. There's also a luxurious ensuite bathroom – with separate bath tub and walk-in shower – and a 5-10m² (54-108ft²) private balcony.



Junior Suite

SH Diana → 32–36m² (344–388ft²) including balcony

Sleeps 2

Junior Suites are only available on SH Diana, and feature a king size bed, separate living room area, luxurious en-suite bathroom, and a 6m² (65ft²) private balcony.



Balcony

25m² (269ft²) including balcony

Sleeps 2/3

Balcony Staterooms feature two single beds or a double bed, a living room area with a flame-effect fireplace, a luxurious bathroom, and a 5m² (54ft²) private balcony.



Oceanview

20m² (215ft²)

Sleeps 2/3

Oceanview Staterooms feature two single beds or a double bed, a combined bedroom and living room area with a flame-effect fireplace, and a luxurious bathroom.

SH Diana

The largest 5-star ship in our fleet combines cutting-edge technology with sophisticated design. This new-generation polar class ship features elegant interiors and dedicated expedition facilities, so you can explore the world in style and comfort.



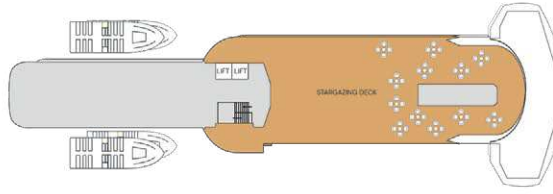
SH Diana, Seychelles

Stateroom Category:

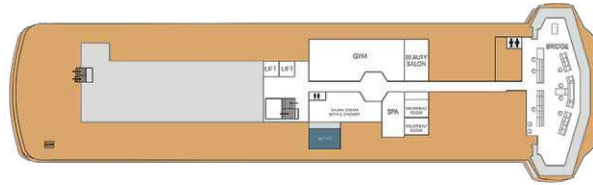
Oceanview D4:	6 (20m ²) ●
Oceanview M4:	14 (20m ²) ●
Balcony D5:	12 (25m ²) ●
Balcony M5:	25 (25m ²) ●
Balcony D6:	29 (25m ²) ●
Junior Suite:	4 (32–36m ²) ●
Suite:	4 (41m ²) ●
Premium Suite:	2 (41m ²) ●

Ship Specification:

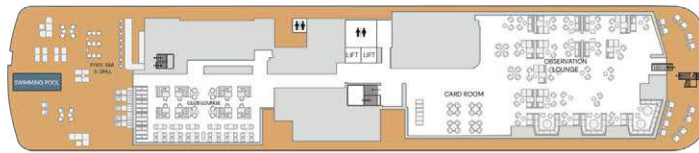
Guest Capacity	192
Staff	127
No. of Decks	9
Staterooms	96
Length	409.7ft (124.9m)
Breadth	79.7ft (24.3m)
Gross Tonnage	12,255
Service Speed	12.5 knots
3rd Guest Capacity	▲
Connecting Staterooms	↔
Wheelchair Accessible Staterooms	♿ 419, 635
Propulsion	Hybrid Diesel Electric, Polar Class PC6
Registered	Liberia
Lifeboats	2 (fully closed)
Zodiacs	14 MK5
Tenders	2 ODC Marine



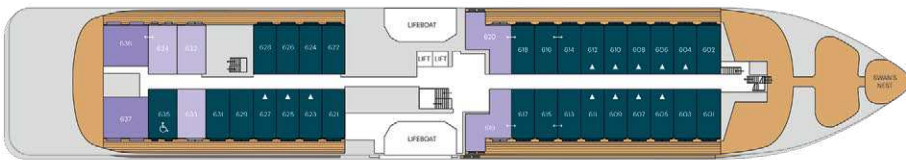
Deck 9
Stargazing Deck



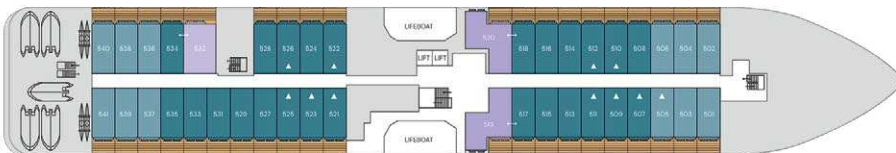
Deck 8
Gym
Sauna
Jacuzzi
Spa
Beauty Salon
Bridge



Deck 7
Swimming Pool
Pool Bar & Grill
Club Lounge
Card Room
Observation Lounge



Deck 6
Premium Suites
Suites
Junior Suites
Balcony Staterooms
Swan's Nest



Deck 5
Balcony Staterooms
Junior Suites
Suites



Deck 4
Swan Restaurant
Reception
Oceanview Staterooms
Launderette



Deck 3
Marina Deck
Zodiac Boarding
Basecamp
Library
Expedition Lab
Clinic
Laundry

SH Vega

Built in Finland's famous Helsinki Shipyard, SH Vega was made for wonderful cruising experiences. Enjoy welcoming spaces to relax on board, unobstructed views throughout the ship, and world-class restaurants, staterooms and amenities.

Stateroom Category:

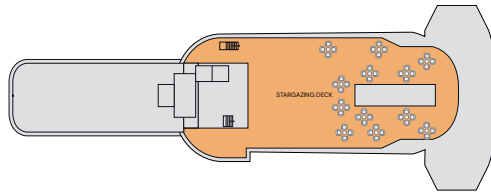
Oceanview D4:	4 (20m ²) ●
Oceanview M4:	12 (20m ²) ●
Balcony D5:	8 (25m ²) ●
Balcony M5:	22 (25m ²) ●
Balcony D6:	24 (25m ²) ●
Suite:	4 (40m ²) ●
Premium Suite:	2 (47m ²) ●

Ship Specification:

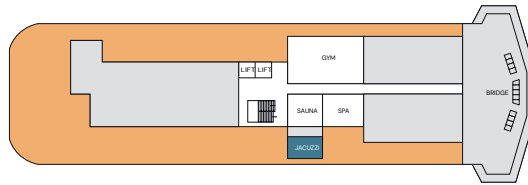
Guest Capacity	152
Staff	117
No. of Decks	9
Staterooms	76
Length	372ft (113.5m)
Breadth	79.7ft (24.3m)
Gross Tonnage	10.617
Service Speed	12 knots
3rd Guest Capacity	▲
4th Guest Capacity	■
Connecting Staterooms	↔
Wheelchair Accessible Staterooms	♿ 415
Propulsion	Hybrid Diesel Electric, Polar Class PC5
Registered	Panama
Lifeboats	2 (fully closed)
Zodiacs	10 MK5 2 MK6



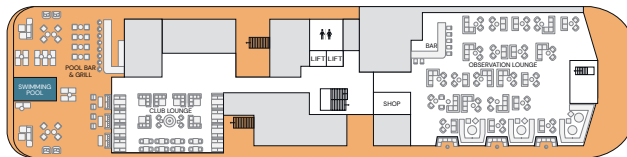
SH Vega, aerial view



Deck 9
Stargazing Deck



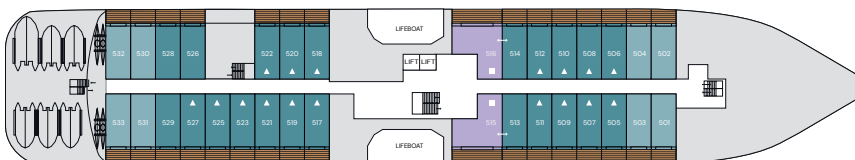
Deck 8
Gym
Sauna
Jacuzzi
Spa
Bridge



Deck 7
Shop
Swimming Pool
Pool Bar & Grill
Club Lounge
Observation Lounge



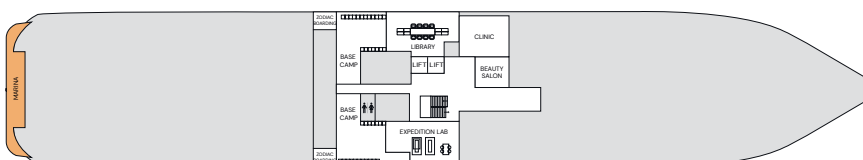
Deck 6
Premium Suites
Suites
Balcony Staterooms D6
Swan's Nest



Deck 5
Balcony Staterooms D5, M5
Suites



Deck 4
Reception
Laundrette
Swan Restaurant
Oceanview Staterooms D4, M4



Deck 3
Clinic
Library
Basecamp
Beauty Salon
Expedition Lab

Book your cultural expedition cruise

Explore far-flung places and experience one-of-a-kind adventures in the company of our exclusive onboard experts. Uncover rich, diverse cultures, ancient sites, and fascinating civilizations. Book with Swan Hellenic to see what others don't.



Thanks for embracing
our travel philosophy